

# ★ OPEN RANGE

Residential

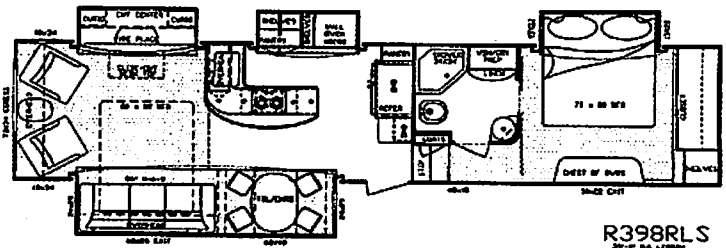
## MSRP PRICE SHEET

2010 Fifth Wheel  
R398RLS  
Effective Date: 2/18/2009

Dealer Name: Berryland Campers  
VIN #: SXMF53927A5001469

**DÉCOR OPTIONS:**

- Haversham (Blue/Brown)
- Lifelong (Green)
- Sheridan (Neutral/Tan)



**OPTIONAL FEATURES**

	Price	Description
X	\$770	2nd A/C 15,000 BTU, Ducted
	\$350	Dinette Booth IPO Free Standing Table & Chairs
	\$1,113	Dual Pane Windows
	\$693	Generator Prep
X	\$308	Power Rear Stabilizer Jacks
X	\$693	Fireplace
X	\$413	Central Vacuum
	\$350	Additional Fantastic Fan in Bedroom
X	\$1,533	Slide-Out Awning Covers (5)

	Price	Description
X	\$700	Four Seasons Protection Package (Mandatory)
X	\$2,800	Entertainment Package (Mandatory)
X	\$4,200	Executive Living Package (Mandatory)

**Four Seasons Protection Package:** Atwood High Performance Furnace, Double Insulated Baggage Doors, Heated Storage Area, Heated Underbelly, Insulated Slide-Floor, Heated & Enclosed Dump Valves, Vented Attic, Remote Digital Thermostat, R-9 Walls, R-21 Floor, up to R-28 Ceiling.

**Entertainment Package:** 42" LCD TV, 19" LCD TV w/Portable Swing Arm, DVD/CD/MP3/AM/FM Player w/ Surround Sound Speakers, Dual Speaker in Pass-Through Storage Area, TV Antenna and booster.

**Executive Living Package:** INTERIOR OPTIONS - Residential 23.0 Cubic Ft. Frididaire Refer, Residential Maytag Gas Oven, Residential Range Hood, Amana Glass Cooktop w/ 2 Sealed Burners, Convection Halftime Microwave, 10 Gal. Quick Recovery Water Heater, 15,000 BTU A/C, Corian Counter Tops in Galley, "Fantastic Fan", Residential 86" Hide-a-bed Sofa, "Posterest" Pillowtop Residential Mattress, Spice Rack, Pull-Out Pantry. EXTERIOR OPTIONS - Power Awning, "MaxxAir" Vent Cover, King-Pin Stabilizer. **NEW STANDARD FEATURE:** Dinette Step-Chair.

**Standard Features:** INTERIOR -High Output Range w/ignitor and Large 22" Oven. HUD Approved Luan Wall Board, Maple Hardwood Raised Panel Glazed Cabinet Doors, Full Extension Drawer Guides, Fluorescent Light in Galley, Pull-Out Waste Basket, Washer/Dryer Prep, Glass Shower Door & Surround, Sky Light above Shower, Cable Hook-up, Satellite Prep, Glass Vessel Lavatory Bowl Sink with Single Lever Lavatory Faucet, Porcelain Toilet, Motion Detector Night Light. EXTERIOR - Contoured Front Cap for Superior Turning Radius, Exterior Utility Center w/Black Tank Flush, Battery Disconnect, "Dexter" Wide Stance E-Z Lube Axles, Equa Flex Suspension, Radial Tires, Wide Stance Front Electric Jacks, Rear Stabilizer Jacks, Large Triple 9" Entry Steps, Dual Outdoor Security Lights, Extended Gutter Spouts, Large Stainless Steel Assist Grab Handle.  
**NEW STANDARD FEATURES:** Wire and Frame for 2nd A/C (includes 50 Amp Service), 16" Aluminum Wheels & Tires, Rear Ladder, Dual LP with Slide Trays (80lb capacity), Rear Fiberglass Cap.

BASE PRICE:	\$55,993.00
OPTIONS:	\$11,417.00
DISCOUNT:	
DESTINATION CHG:	\$992.00
FUEL SURCHARGE:	\$165.00
<b>TOTAL:</b>	<b>\$68,567.00</b>

\*\*Fuel surcharge to fluctuate with current fuel prices and may reflect an increase or decrease accordingly.

\*\*\* Prices, features and options are subject to change without notice.

OPEN RANGE RV COMPANY - 3195 N. S.R. 5, SHIPSHEWANA, INDIANA 46565 PHONE: (260) 768-7771 FAX (260) 768-7077

**SALES FAX: (260) 768-7077**