

★
OPEN RANGE
 Journey Edition

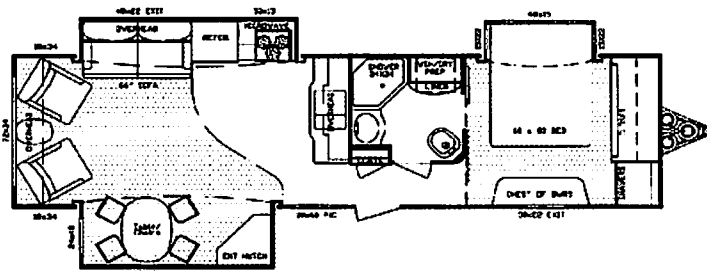
2009 Travel Trailer
 JT337RLS
 Effective Date: 7/01/2008

MSRP PRICE SHEET

Dealer Name: BERRYLAND CAMPERS
 VIN # 5XMTR362695000666

DÉCOR OPTIONS:

- Haversham (Blue/Brown)
- Lifelong (Green)
- Sheridan (Neutral/Tan)



JT337RLS

OPTIONAL FEATURES

	Price	Description
X	\$413	Wire and Frame for 2nd A/C (Mandatory) (Includes 50 Amp Service)
	\$651	2nd A/C 13,500 BTU, Non-Ducted
	\$1,113	Dual Pane Windows
	\$735	16" Aluminum Wheels & Tires
X	\$140	Rear Ladder
	\$350	Fantastic Fan in: Bedroom / Bathroom / Kitchen
	\$693	Fireplace
	\$266	One Recliner IPO Swivel Rocker
X	\$532	Two Recliners IPO Swivel Rockers

	Price	Description
X	\$693	19" Flat Screen Bedroom TV
	\$210	Power Tongue Jack
X	\$700	Four Seasons Protection Package (Mandatory)
X	\$1,400	Entertainment Package (Mandatory)
X	\$2,800	Executive Living Package (Mandatory)
X	\$91	RVIA
	\$273	Q.A.I. Construction (Canadian Dealers ONLY)
	\$91	Go RVing MEP Fee (Canada)

Four Seasons Protection Package: Atwood High Performance Furnace, Double Insulated Baggage Doors, Heated Storage Area, Heated Underbelly, Insulated Slide-Floor, Heated & Enclosed Dump Valves, Vented Attic, Remote Digital Thermostat, R-9 Walls, R-21 Floor, up to R-28 Ceiling.

Entertainment Package: 27" Digital TV, DVD/CD/MP3/AM/FM Player w/Jensen Surround Sound Speaker, Dual Jensen Speaker in Pass-Through Storage Area, TV Antenna and booster.

Executive Living Package: INTERIOR OPTIONS - Large 8 Cubic Ft. Refer, 10 Gal. Quik Recovery Water Heater, 15,000 BTU A/C, Power Vent, Residential Hide-a-bed Sofa, Residential Mattress, Spice Rack, Pull-Out Pantry. EXTERIOR OPTIONS - Power Awning, "MaxxAir" Vent Cover, 15" Steel 6-Lug Wheels.

Standard Features: INTERIOR -High Output Range w/Ignitor and Large 22" Oven. HUD Approved Luan Wall Board, Maple Hardwood Raised Panel Glazed Cabinet Doors, Full Extension Drawer Guides, Fluorescent Light in Galley, Pull-Out Waste Basket, Portable Laundry Basket, Washer/Dryer Prep, Glass Shower Door & Surround, Sky Light above Shower, Cable Hook-up, Satellite Prep, Large Lavatory Bowl Sink, Porcelain Toilet, Motion Detector Night Light. EXTERIOR - Exterior Utility Center w/Black Tank Flush, "Dexter" Wide Stance E-Z Lube Axles, Equa Flex Suspension, Radial Tires, Front & Rear Stabilizer Jacks, Large Triple 9" Entry Steps, Dual Outdoor Security Lights, Extended Gutter Spouts, Large Stainless Steel Assist Grab Handle.

BASE PRICE:	<u>\$32,473.00</u>
OPTIONS:	<u>\$6,769.00</u>
DESTINATION CHG:	<u>\$992.00</u>
FUEL SURCHARGE:	<u>\$679.00</u>
TOTAL:	\$40,913.00

*** Prices, features and options are subject to change without notice.