

★  
**OPEN RANGE**  
 Journey Edition

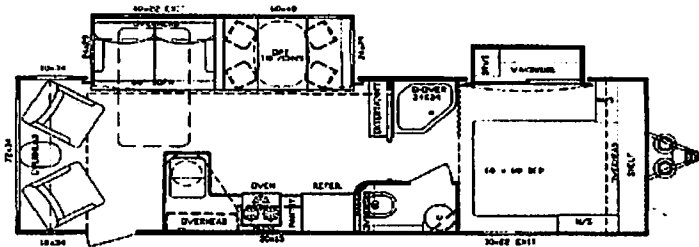
2009 Travel Trailer  
 JT287RLS  
 Effective Date: 7/01/2008

## MSRP PRICE SHEET

Dealer Name: BERRYLAND CAMPERS  
 VIN # SXMTJ322295000709

**DÉCOR OPTIONS:**

- Haversham (Blue/Brown)
- Lifelong (Green)
- Sheridan (Neutral/Tan)



JT287RLS

**OPTIONAL FEATURES**

	Price	Description
X	\$413	Wire and Frame for 2nd A/C (Mandatory) (Includes 50 Amp Service)
X	\$651	2nd A/C 13,500 BTU, Non-Ducted
	\$1,113	Dual Pane Windows
	\$735	16" Aluminum Wheels & Tires
X	\$140	Rear Ladder
	\$350	Fantastic Fan in: Bedroom / Bathroom / Kitchen
	\$266	One Recliner IPO Swivel Rocker
	\$532	Two Recliners IPO Swivel Rockers

	Price	Description
	\$693	19" Flat Screen Bedroom TV
	\$476	Free Standing Table & Chairs in place of Booth
X	\$210	Power Tongue Jack
X	\$700	Four Seasons Protection Package (Mandatory)
X	\$1,400	Entertainment Package (Mandatory)
X	\$2,800	Executive Living Package (Mandatory)
X	\$91	RVIA
	\$273	Q.A.I. Construction (Canadian Dealers ONLY)
	\$91	Go RVing MEP Fee (Canada)

**Four Seasons Protection Package:** Atwood High Performance Furnace, Double Insulated Baggage Doors, Heated Storage Area, Heated Underbelly, Insulated Slide-Floor, Heated & Enclosed Dump Valves, Vented Attic, Remote Digital Thermostat, R-9 Walls, R-21 Floor, up to R-28 Ceiling.

**Entertainment Package:** 26" LCD TV, DVD/CD/MP3/AM/FM Player w/Jensen Surround Sound Speaker, TV Antenna and booster.

BASE PRICE:	<u>\$30,793.00</u>
OPTIONS:	<u>\$6,405.00</u>
DESTINATION CHG:	<u>\$992.00</u>
FUEL SURCHARGE:	<u>\$582.00</u>
<b>TOTAL:</b>	<b><u>\$38,772.00</u></b>

**Executive Living Package:** INTERIOR OPTIONS - Large 8 Cubic Ft. Refer, 10 Gal. Quick Recovery Water Heater, 15,000 BTU A/C, Power Vent, Residential Hide-a-bed Sofa, Residential Mattress, Spice Rack, Pull-Out Pantry. EXTERIOR OPTIONS - Power Awning, "MaxxAir" Vent Cover, 15" Steel 6-Lug Wheels.

**Standard Features:** INTERIOR -High Output Range w/Ignitor and Large 22" Oven. HUD Approved Luan Wall Board, Maple Hardwood Raised Panel Glazed Cabinet Doors, Full Extension Drawer Guides, Fluorescent Light in Galley, Pull-Out Waste Basket, Portable Laundry Basket, Glass Shower Door & Surround, Sky Light above Shower, Cable Hook-up, Satellite Prep, Large Lavatory Bowl Sink, Porcelain Toilet, Motion Detector Night Light. EXTERIOR - Exterior Utility Center w/Black Tank Flush, "Dexter" Wide Stance E-Z Lube Axles, Equa Flex Suspension, Radial Tires, Front & Rear Stabilizer Jacks, Large Triple 9" Entry Steps, Dual Outdoor Security Lights, Extended Gutter Spouts, Large Stainless Steel Assist Grab Handle.

\*\*\* Prices, features and options are subject to change without notice.