

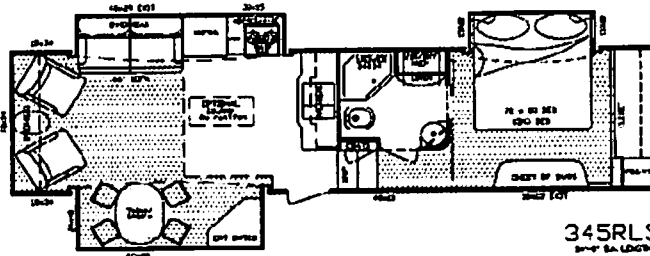
★ OPEN RANGE MSRP PRICE SHEET

2010 Fifth Wheel
345RLS
Effective Date: 8/1/09

DEALER NAME: Berryland Campers
VIN # 5XMFR3429A5001699

DÉCOR OPTIONS:

- Haversham (Blue/Brown)
- Lifelong (Green)
- Sheridan (Neutral/Tan)



345RLS

OPTIONAL FEATURES

Price	Description
\$651	2nd A/C 13,500 BTU, Non-Ducted
\$1,113	Dual Pane Windows
\$693	LP Generator Prep
\$280	Remote for 4-Point Leveling and Stabilizing System
\$350	Additional Fantastic Fan in Bedroom
\$693	Fireplace
\$413	Central Vacuum
X \$1,253	Slide-Out Awning Covers (3)
X \$707	Island on Castors - Open Range Model

Price	Description
X \$700	Four Seasons Package Package (Mandatory)
X \$2,800	Entertainment Package (Mandatory)
X \$4,200	Executive Living Package (Mandatory)
X \$134	RVIA
\$273	Q.A.I. Construction (Canadian Dealers ONLY)
\$91	Go RVing MEP Fee (Canada)
	State Seal

Four Seasons Protection Package: Atwood High Performance Furnace, Double Insulated Baggage Doors, Heated Storage Area, Heated Underbelly, Insulated Slide-Floor, Heated & Enclosed Dump Valves, Vented Attic, Remote Digital Thermostat, R-9 Walls, R-21 Floor, up to R-28 Ceiling.

Entertainment Package: 32" LCD TV, 19" LCD TV w/Portable Swing Arm, DVD/CD/MP3/AM/FM Player w/ Surround Sound Speakers, Dual Speaker in Pass Through Storage Area, TV Antenna and booster.

BASE PRICE:	\$43,946.00
OPTIONS:	\$9,794.00
DISCOUNT:	
DESTINATION CHG:	\$992.00
FUEL SURCHARGE:	\$233.00
<small>*Fuel surcharge to fluctuate with current fuel prices and may reflect an increase or decrease accordingly</small>	
TOTAL:	\$54,965.00

Executive Living Package: INTERIOR OPTIONS - Large 8 Cubic Ft. Refer, 10 Gal. Quick Recovery Water Heater, 15,000 BTU A/C, Corian Counter Tops in Galley, "Fantastic Fan", Residential Hide-a-bed Sofa, "Posterest" Pillowtop Residential Mattress, Spice Rack, Pull-Out Pantry.
EXTERIOR OPTIONS - Power Awning, "MaxxAir" Vent Cover. **NEW STANDARD FEATURE:** Dinette Step-Chair.

Standard Features: INTERIOR - High Output Range w/Ignitor and Large 22" Oven. HUD Approved Luan Wall Board, Maple Hardwood Raised Panel Glazed Cabinet Doors, Full Extension Drawer Guides, Fluorescent Light in Galley, Pull-Out Waste Basket, Washer/Dryer Prep, Glass Shower Door & Surround, Sky Light above Shower, Cable Hook-up, Satellite Prep, Glass Vessel Lavatory Bowl Sink with Single Lever Lavatory Faucet, Porcelain Toilet, EZ Access Entry Light.
EXTERIOR - Coutoured Front Cap for Superior Turning Radius, Exterior Utility Center w/Black Tank Flush, Battery Disconnect, "Dexter" Wide Stance E-Z Lube Axles, EZ Flex Suspension, Radial Tires, Large Triple 9" Entry Steps, Dual Outdoor Security Lights, Extended Gutter Spouts, Large Stainless Steel Assist Grab Handle. Wire and Frame for 2nd A/C (Includes 50 Amp Service), 16" Aluminum Wheels & Tires, Rear Ladder, Dual LP with Slide Trays (80lb capacity), Rear Fiberglass Cap.

NEW STANDARD FEATURES: 4-Point Leveling and Stabilizing System.

*** Prices, features and options are subject to change without notice.

OPEN RANGE RV COMPANY - 3195 N. S. R. 5, SHIPSEWANA, INDIANA 46565 PHONE (260) 768-7771 FAX (260) 768-7077

7/21/2009

SALES FAX: (260) 768-7077