

★
OPEN RANGE
 Journeyer

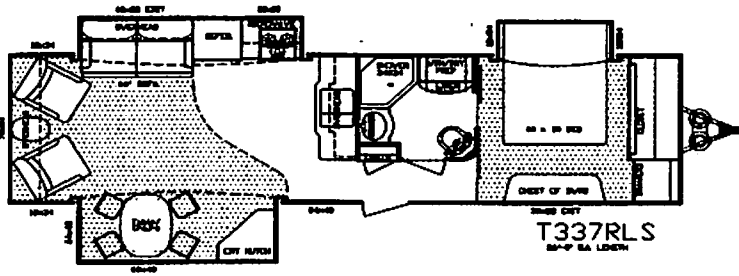
2010 Travel Trailer
 JT337RLS
 Effective Date: 03/10/09

MSRP PRICE SHEET

DEALER NAME: Berryland
VIN #: 5XMTJ3627A5001353

DÉCOR OPTIONS:

- Haversham (Blue/Brown)
- Lifelong (Green)
- Sheridan (Neutral/Tan)



JT337RLS

OPTIONAL FEATURES

	Price	Description
X	\$651	2nd A/C 13,500 BTU, Non-Ducted
	\$1,113	Dual Pane Windows
X	\$735	16" Aluminum Wheels & Tires
X	\$210	Power Tongue Jack
	\$350	Fantastic Fan in: Bedroom / Bathroom / Kitchen
	\$693	Fireplace
X	\$693	19" Flat Screen Bedroom TV
X	\$532	Two Recliners IPO Swivel Rockers
	\$1,253	Slide-Out Awning Covers (3)

	Price	Description
X	\$700	Four Seasons Protection Package (Mandatory)
X	\$2,100	Entertainment Package (Mandatory)
X	\$3,500	Executive Living Package (Mandatory)
X	\$91	RVIA
	\$273	Q.A.I. Construction (Canadian Dealers ONLY)
	\$91	Go RVing MEP Fee (Canada)
		State Seal

Four Seasons Protection Package: Atwood High Performance Furnace, Double Insulated Baggage Doors, Heated Storage Area, Heated Underbelly, Insulated Slide-Floor, Heated & Enclosed Dump Valves, Vented Attic, Remote Digital Thermostat, R-9 Walls, R-21 Floor, up to R-28 Ceiling.

Entertainment Package: 32" Digital TV, DVD/CD/MP3/AM/FM Player w/ Surround Sound Speakers, TV Antenna and booster.

BASE PRICE:	<u>\$34,286.00</u>
OPTIONS:	<u>\$9,212.00</u>
DISCOUNT:	<u> </u>
DESTINATION CHG:	<u>\$992.00</u>
FUEL SURCHARGE:	<u>\$165.00</u>
TOTAL:	<u>\$44,655.00</u>

**Fuel surcharge to fluctuate with current fuel prices and may reflect an increase or decrease accordingly.

Executive Living Package: INTERIOR OPTIONS - Large 8 Cubic Ft. Refer, 10 Gal. Quick Recovery Water Heater, 15,000 BTU A/C, Power Vent, Residential Hide-a-bed Sofa, Residential Mattress, Spice Rack, Pull-Out Pantry. **EXTERIOR OPTIONS** - Power Awning, "MaxxAir" Vent Cover, 15" Steel 6-Lug Wheels.

Standard Features: INTERIOR -High Output Range w/ignitor and Large 22" Oven. HUD Approved Luan Wall Board, Maple Hardwood Raised Panel Glazed Cabinet Doors, Full Extension Drawer Guides, Fluorescent Light in Galley, Pull-Out Waste Basket, Portable Laundry Basket, Washer/Dryer Prep, Glass Shower Door & Surround, Sky Light above Shower, Cable Hook-up, Satellite Prep, Large Lavatory Bowl Sink, Porcelain Toilet, Motion Detector Night Light. EXTERIOR - Exterior Utility Center w/Black Tank Flush, "Dexter" Wide Stance E-Z Lube Axles, Equa Flex Suspension, Radial Tires, Front & Rear Stabilizer Jacks, Large Triple 9" Entry Steps, Dual Outdoor Security Lights, Extended Gutter Spouts, Large Stainless Steel Assist Grab Handle.
NEW STANDARD FEATURES: Wire and Frame for 2nd A/C (includes 50 amp service), Rear Ladder, Front Fiberglass Cap.

*** Prices, features and options are subject to change without notice.