

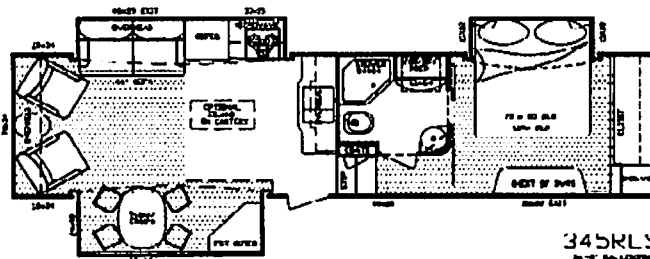
★ OPEN RANGE MSRP PRICE SHEET

2010 Fifth Wheel
345RLS
Effective Date: 12/23/2008

DEALER NAME: Berryland Campers
VIN # 5XMFR3428A5001239

DÉCOR OPTIONS:

- Haversham (Blue/Brown)
- Lifelong (Green)
- Sheridan (Neutral/Tan)



345RLS

OPTIONAL FEATURES

| Price | Description |
|-----------|-------------------------------------|
| \$651 | 2nd A/C 13,500 BTU, Non-Ducted |
| \$1,113 | Dual Pane Windows |
| \$693 | Generator Prep |
| X \$308 | Power Rear Stabilizer Jacks |
| \$350 | Additional Fantastic Fan in Bedroom |
| \$693 | Fireplace |
| \$413 | Central Vacuum |
| X \$1,253 | Slide-Out Awning Covers (3) |

| Price | Description |
|-----------|---|
| X \$700 | Four Seasons Package Package (Mandatory) |
| X \$2,800 | Entertainment Package (Mandatory) |
| X \$4,200 | Executive Living Package (Mandatory) |
| X \$91 | RVIA |
| \$273 | Q A I. Construction (Canadian Dealers ONLY) |
| \$91 | Go RVing MEP Fee (Canada) |
| | State Seal |
| X \$707 | Island with Castors |

Four Seasons Protection Package: Atwood High Performance Furnace, Double Insulated Baggage Doors, Heated Storage Area, Heated Underbelly, Insulated Slide-Floor, Heated & Enclosed Dump Valves, Vented Attic, Remote Digital Thermostat, R-9 Walls, R-21 Floor, up to R-28 Ceiling.

Entertainment Package: 32" LCD TV, 19" LCD TV w/Portable Swing Arm, DVD/CD/MP3/AM/FM Player w/ Surround Sound Speakers, Dual Speaker in Pass-Through Storage Area, TV Antenna and booster.

| | |
|------------------|--------------------|
| BASE PRICE: | \$43,946.00 |
| OPTIONS: | \$10,059.00 |
| DISCOUNT: | |
| DESTINATION CHG: | \$992.00 |
| FUEL SURCHARGE: | \$146.00 |
| TOTAL: | \$55,143.00 |

*Fuel surcharge to fluctuate with current fuel prices and may reflect an increase or decrease accordingly.

Executive Living Package: INTERIOR OPTIONS - Large 8 Cubic Ft. Refer, 10 Gal. Quick Recovery Water Heater, 15,000 BTU A/C, Corian Counter Tops in Galley, "Fantastic Fan", Residential Hide-a-bed Sofa, "Posterest" Pillowtop Residential Mattress, Spice Rack, Pull-Out Pantry.
EXTERIOR OPTIONS - Power Awning, "MaxxAir" Vent Cover, King-Pin Stabilizer. **NEW STANDARD FEATURE:** Dinette Step-Chair.

Standard Features: INTERIOR -High Output Range w/Ignitor and Large 22" Oven. HUD Approved Luan Wall Board, Maple Hardwood Raised Panel Glazed Cabinet Doors, Full Extension Drawer Guides, Fluorescent Light in Galley, Pull-Out Waste Basket, Portable Laundry Basket, Washer/Dryer Prep, Glass Shower Door & Surround, Sky Light above Shower, Cable Hook-up, Satellite Prep, Glass Vessel Lavatory Bowl Sink with Single Lever Lavatory Faucet, Porcelain Toilet, Motion Detector Night Light. EXTERIOR - Contoured Front Cap for Superior Turning Radius, Exterior Utility Center w/Black Tank Flush, Battery Disconnect, "Dexter" Wide Stance E-Z Lube Axles, Equa Flex Suspension, Radial Tires, Wide Stance Front Electric Jacks, Rear Stabilizer Jacks, Large Triple 9" Entry Steps, Dual Outdoor Security Lights, Extended Gutter Spouts, Large Stainless Steel Assist Grab Handle.
NEW STANDARD FEATURES: Wire and Frame for 2nd A/C (includes 50 Amp Service), 16" Aluminum Wheels & Tires, Rear Ladder, Dual LP with Slide Trays (80lb capacity), Rear Fiberglass Cap.

*** Prices, features and options are subject to change without notice.

OPEN RANGE RV COMPANY • 3195 N. S. R. 5, SHIPSHEWANA, INDIANA 46565 PHONE (260) 768-7771 FAX (260) 768-7077

11/1/2008

SALES FAX: (260) 768-7077